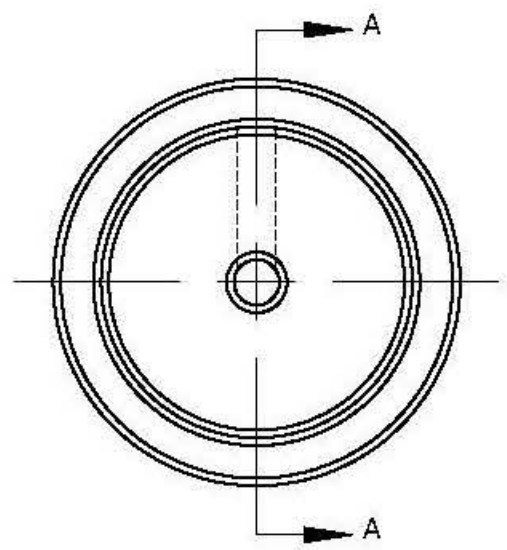
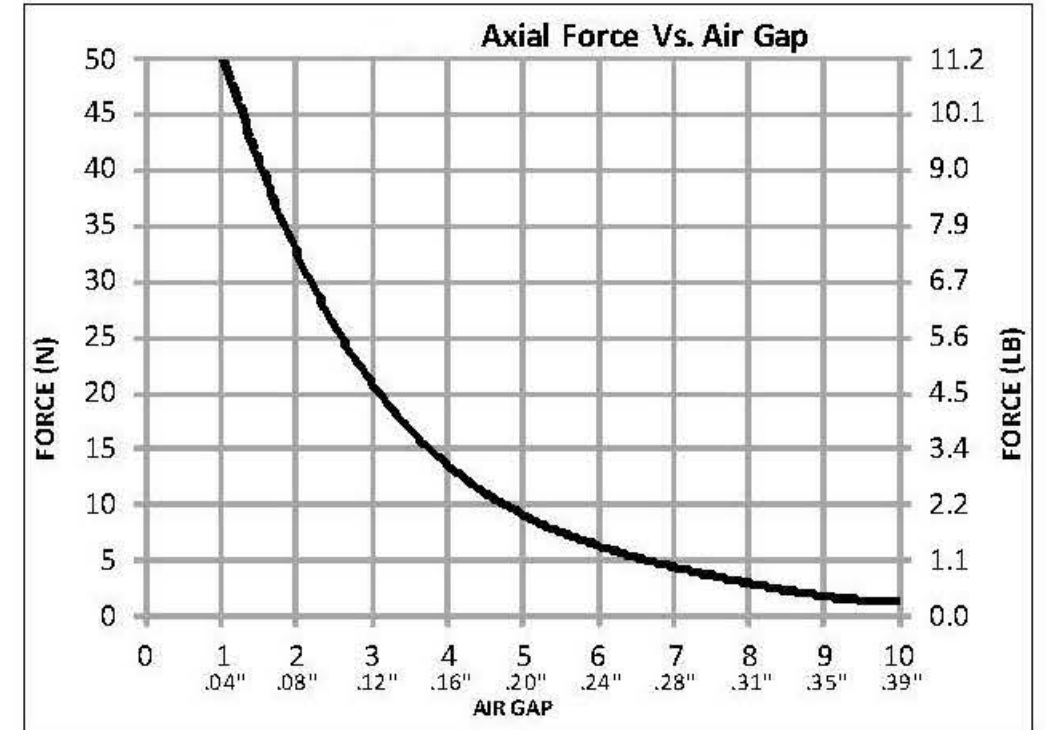
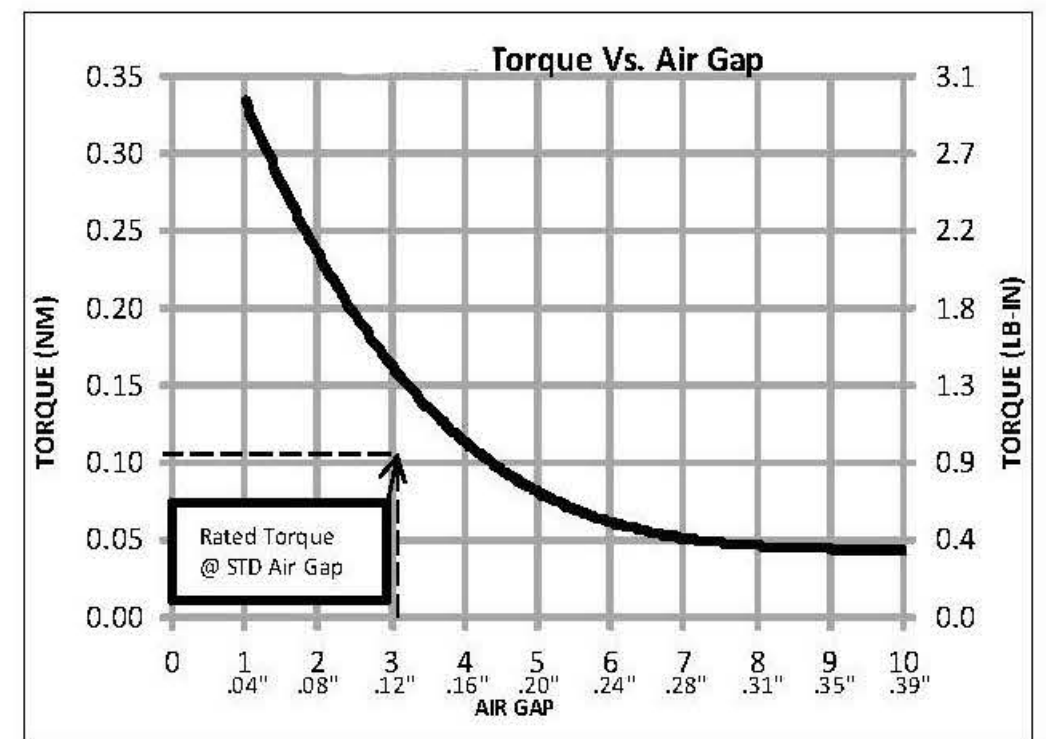
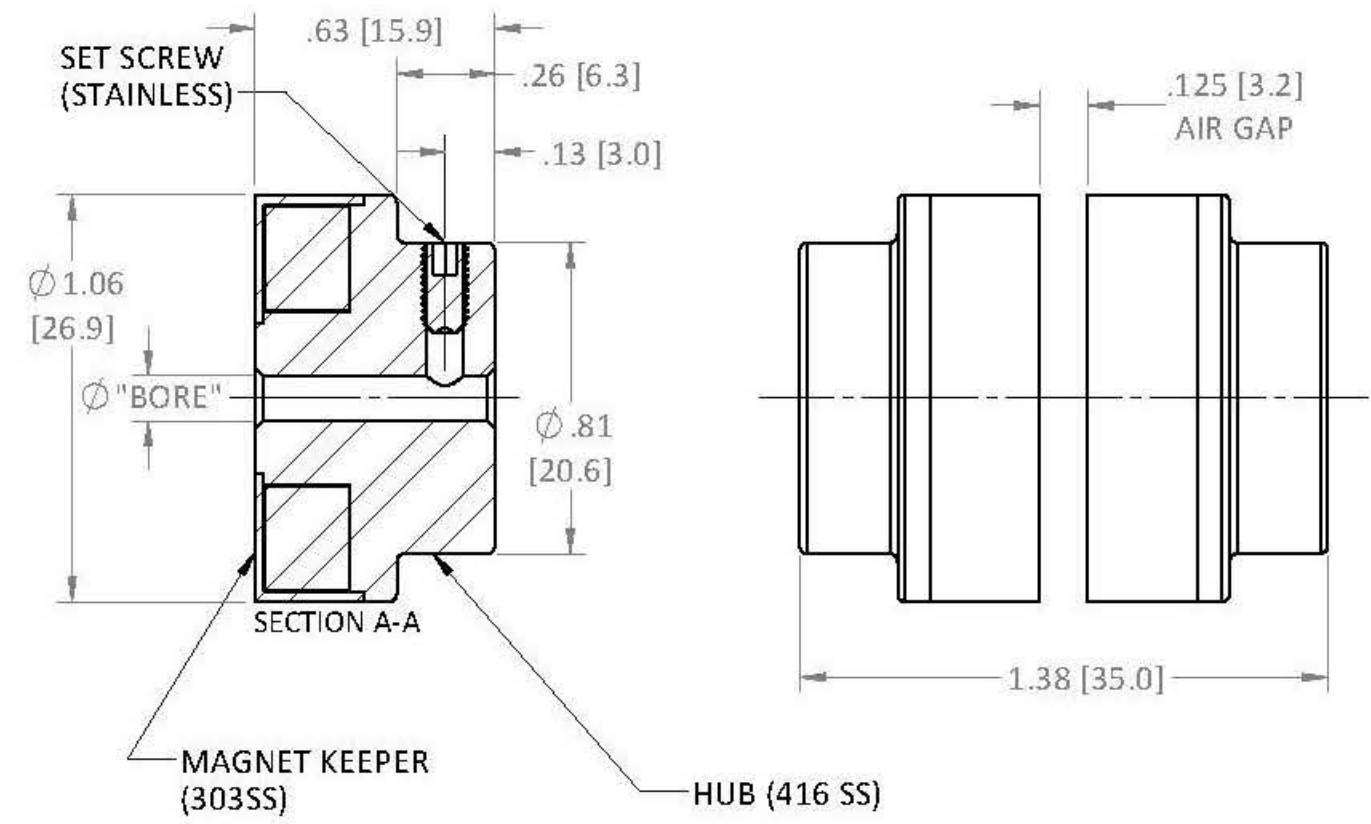


MODEL	RATED TORQUE @ STD. AIR GAP	BREAKAWAY TORQUE	MAX RPM
MDC 0.2	.11 Nm	1 Lb-in	42,500

REVISIONS			
REV.	ECN.	DESCRIPTION	DATE



COUPLING HALF:
WEIGHT: 0.11 Lbs (0.05 Kg)



MODEL	BORE		SET SCREW
MDC 0.2	mm ^{H8}	in ^{+0.001}	CUP POINT
	SOLID		
	3.18	.125	#4-40 X 1/4
	4.76	.1875	#8-32 X 1/4
	5.00	.197	M4-0.7 x 6mm
	6.00	.236	M4-0.7 x 6mm
	6.35	.250	#8-32 X 1/4
	7.94	.3125	#8-32 X 1/4
	8.00	.315	M4-0.7 x 6mm

OTHER SIZES AVAILABLE; SPECIFY BORE

USED ON	SCALE 2:1	MATERIAL SEE PRT DWG	DESCRIPTION Cut Sheet
UNLESS OTHERWISE SPECIFIED:		FINISH SEE PRT DWG	
ALL DIMENSIONS ARE IN INCHES TOLERANCES: DECIMAL: XX ± .01 XXX ± .005 ANGULAR: ± 1° GEN. CONCENTRICITY: .001 T.I.R. MACH. FILLETS: .010 R MACH. EDGES: .015 R OR CHMF. UNSPECIFIED RADII: .015 R IN MICROINCHES RMS 32 GEOMETRIC: TO MIL-ST'D. 8 REMOVE ALL BURRS & SHARP EDGES		DRAWN AMD 10/17/14	DWG. NO.
		CHECKED	REV.
		SIZE: B	